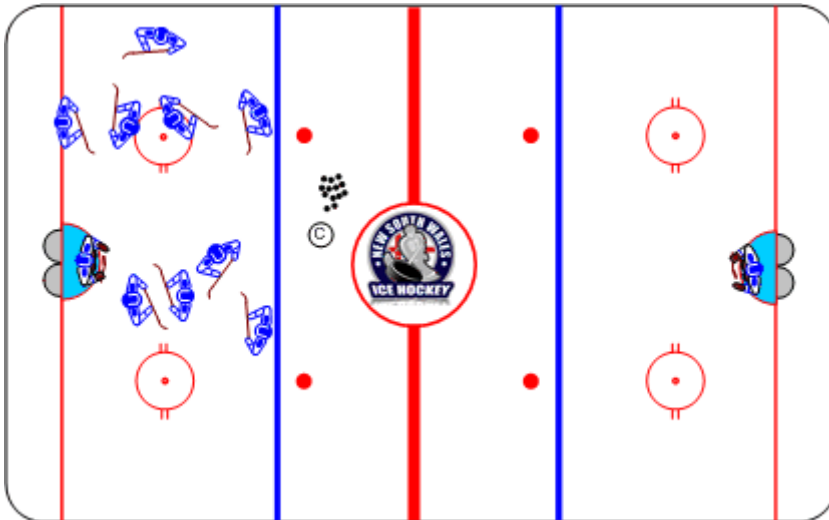




5-on-4 Powerplay Penalty Killing

Duration: 12 mins

- Half-ice controlled scrimmage
- Feedback and instruction on whistle, © restarts play with new puck to offense



Coaching Tips

- Powerplay game plan execution
- Penalty Killing game plan execution

Execution Tips

- © to protect Powerplay confidence and frustration