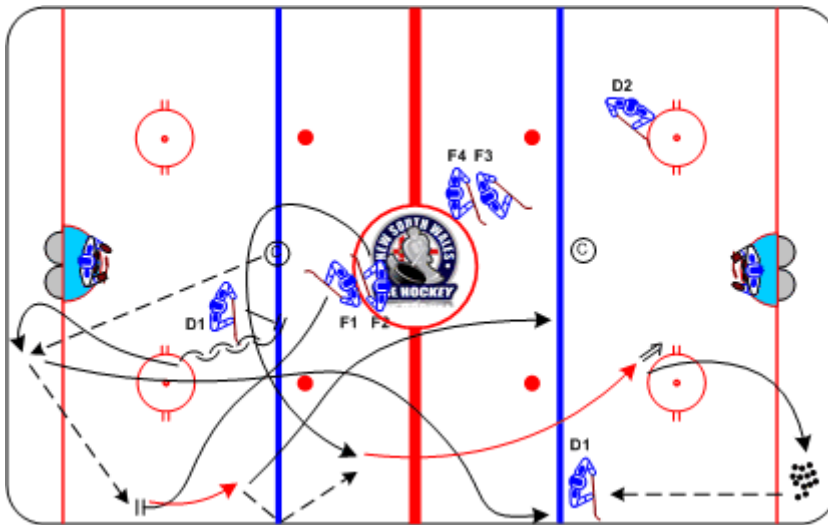




## Double Chip, 2-Shot Drill

Duration: 7 mins

- D1 skates to blue line, © spots puck
- D1 skates backwards, pivots to puck, passes to F1
- F1 skates and chips to F2
- F2 drives, shoots, retrieves 2nd puck and passes to D1
- F1 skates quickly to slot, stops, screens point shot



### Coaching Tips

- F1 skates up ice before chipping puck
- F2 supports from behind puck
- D1 passes and supports up ice

### Execution Tips

- Spot puck for next group after 2nd shot on goal
- Switch sides at 4 minutes