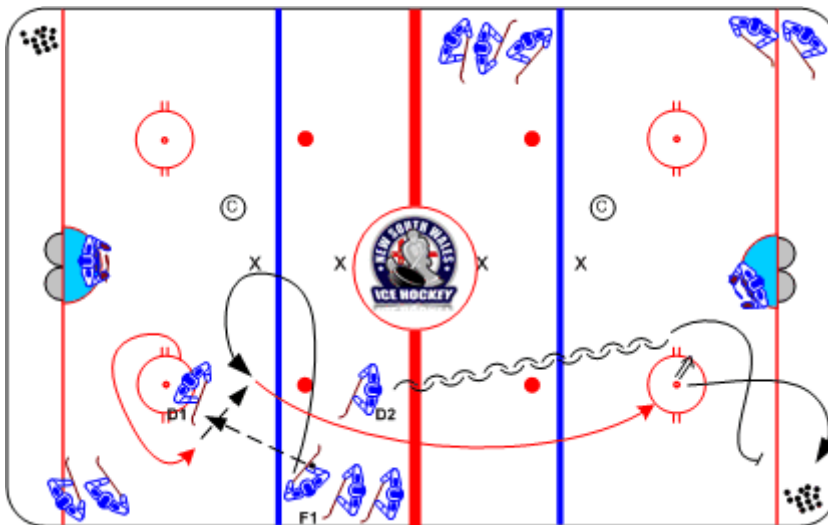




## 1-on-1 with 2nd Puck

Duration: 10 mins

- F1 passes to D1
- D1 executes an escape move (tight turn) and returns a pass to F1
- F1 attacks D2 1-on-1
- After the initial attack, F1 retrieves 2nd puck from corner and attacks D2



### Coaching Tips

- Attacking net from drive and quiet zone
- Quick attack and change of attack

### Execution Tips

- Encourage the use of a variety of escape moves
- Net drive must be the primary offensive tactic
- F1 can not take 2nd puck behind the net